

---

# WATER MONITORING SOLUTIONS

---

# WASTEWATER MONITORING



*Smart  
Evolutive  
Open Source  
Self-powered*



**HYDREKA**  
[www.hydreka.com](http://www.hydreka.com)  
A HALMA COMPANY

### Applications:

- Diagnosis of wastewater networks,
- Checking existing flowmeters,
- Calibration of lift pumps,
- Volume quantification.

Speed chord  x2

Battery life  Up to 6 months

2 x 4-20 mA sensor connection 

Data recovery by USB key 

**ChronoFLO® 2**

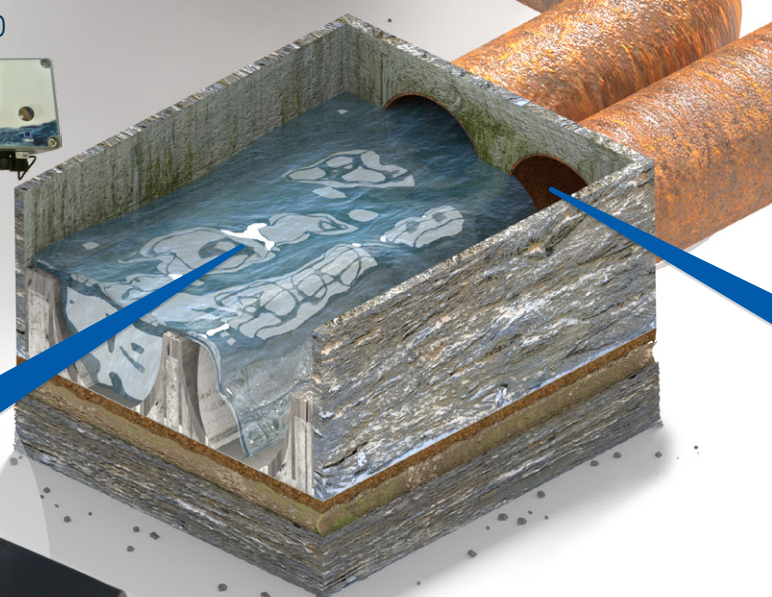




Stationary MainFLO 

DTU2 

Portable MainFLO 

Height/Surface tables included 

Digital sensor with temperature measurement 

Installation in explosive atmosphere 

Signal quality 

**DVP**




### Applications:

- Wastewater networks monitoring, irrigation canals, rivers and streams,
- Survey and diagnosis,
- Flood prevention,
- Industrial discharge agreements,
- Onsite flowmeter control.



**BubbleFLO**

- Measurement accuracy
- Battery Life: Up to 6 months
- Height/Surface tables included
- Numeric sensors connection

**Applications:**

- Wastewater networks monitoring, irrigation canals, rivers and streams,
- Survey and diagnosis,
- Industrial discharge agreements,
- Onsite flowmeter control.

**SurfaceFLO**

- Non contact radar technology
- Height/Surface tables included
- Signal quality
- Self-leveling

**Applications:**

- Dimensioning and control of plant and processes,
- Discharge monitoring for (re)adjustment of calculation models,
- Flow measurement monitoring in aggressive environments,
- Any other open channels and wastewater applications.

**Also available:**



Sampler range

Rain gauge

# WASTEWATER MONITORING

Your partner for over **30 years.**



## Full service

### Rental

To realize your water networks diagnosis, our rental department offers you from 1 week to up to a year a full range of products and as well our Winfluid software / Webfluid data hosting solution. More than 10 000 products in stock (which 25% with GPRS/3G transmission) for a continuous availability.

### Training

Hydreka provides different training programs based on water-related metrology. Training covers both theoretical and practical aspects of measuring systems operation, monitoring sites selection and installation.

### Assistance

#### Hotline

A problem during the installation of any equipment or programming? Any doubt about its use? Our technical engineers are available on **+33 (0)4 72 53 11 53**.

#### Field Deployment and Monitoring

Hydreka and its partner install and monitor all the equipment to make available data on our secure data hosting.

### After Sales

#### Control and calibration

As part of its ISO 9000 quality approach, Hydreka has established efficient and automated procedures with COFRAC traceable references to certify products. Several maintenance contracts are also available in order to ensure a greater durability.

#### Hydraulic rigs



Full pipe

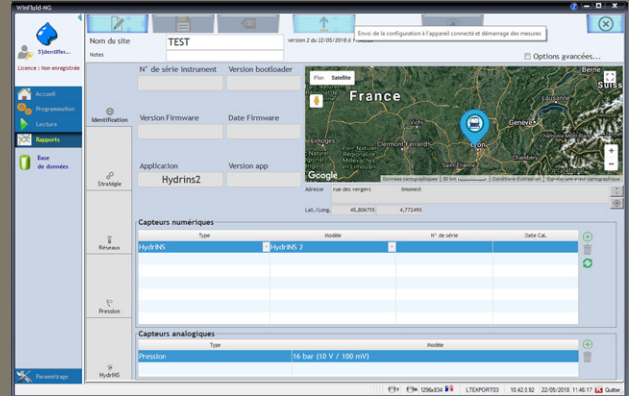


Open channel

## Software

**PROGRAMMING - DATA RECOVERY – DATA PROCESING**

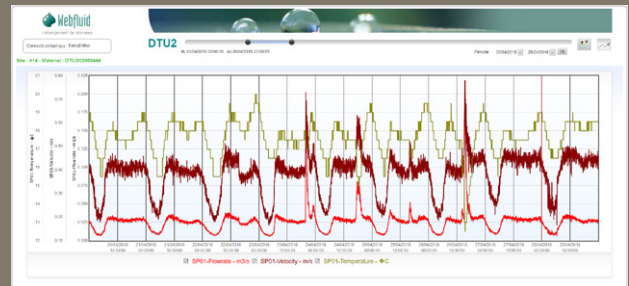
Universal Windows software adaptable to all Hydreka products.



## Data Hosting

**CONTINUOUS SECURE NETWORK MONITORING**

Acquisition, centralization, data hosting and data visualization are available 24/7 safely.



**HYDREKA**  
www.hydreka.com  
A HALMA COMPANY

1, rue des Vergers - Bât 2A  
69760 Limonest - France

Tél. +33 (0)4 72 53 11 53  
Fax +33 (0)4 78 83 44 37  
E-mail : hydreka@hydreka.fr