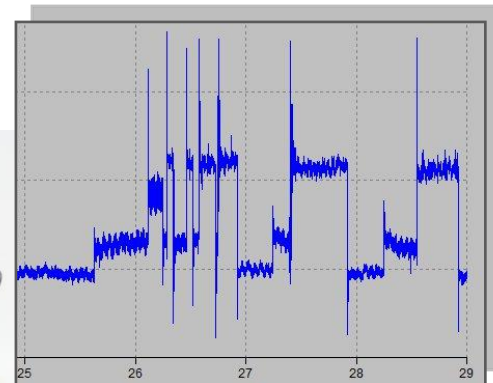


Integrated measuring systems for the whole water cycle



# Pressure transient Data logger



Input frequency up to  
32 Hz

Event recording above  
threshold

50 day battery life



**HYDREKA**  
[www.hydreka.fr](http://www.hydreka.fr)

## Application

The pressure transient data logger has been specifically designed to monitor rapid pressure changes such as « water hammer » or surge in water pipe systems.

## Characteristics

- Continuous logging or on threshold
- Pre and post logging possibility
- Internal battery for remote application
- Delayed start
- Interfaced with Winfluid, Winfluid mobile software
- Real time data
- Memory up to 250 000 readings and more



## Product specification

<b>Pressure transducer</b>	External pressure transducer 0-35 bars Accuracy : $\pm 0,1 \%$ Cable length : 3 m (standard)
<b>Conversion A/D</b>	Resolution : 12 bit [0.025% PE]
<b>Sampling</b>	Up to 32 samples per second. Continuous sampling depending on programming at [1, 2, 4, 8, 16 or 32 Hz]
<b>Power supply</b>	Internal lead battery: 12 V, 12 Ah. Battery life : 50 day at 32 Hz sampling
<b>Threshold</b>	High or low threshold programming. Possible to program both at the same time. Pre-trigger programming up to 62 readings. Post-trigger programming up to 65 535 readings. If a new trigger condition happens before the end of the post trigger logging period, the Logging goes on as per programming
<b>Memory</b>	250 000 datas (up to 1 000 000)
<b>Programming</b>	Configuration via RS232 connection using Winfluid software or Winfluid Mobile for PDA and smartphone Parameters : Time stamping, start and stop time, site name, sampling frequency , pre and post triggering, type of trigger (low and/or high threshold or continuous mode)
<b>Data Transfer</b>	115 200 bauds
<b>Measurement</b>	Available in real time during the communication with the device.
<b>On / Off</b>	With internal switch
<b>Ingress protection</b>	Logger IP67. Pressure transducer IP68.
<b>Material</b>	Case : polypropylene, ABS, Foam : polyurethane
<b>Weight</b>	Without battery: 2,1 kg ; with 12 Ah battery : 5,8 kg.
<b>Dimensions</b>	L 270 x l 246 x h 124 (mm)
<b>External connectors</b>	2 military connectors with waterproof caps
<b>Operating temperature</b>	-20°C to +70°C

Products available for sales and rental. Please contact us for more information.

**HYDREKA**  
www.hydreka.fr

34, route de Saint Romain - 69450 St Cyr au Mont Or - France  
Tel. +33 (0)4 72 53 11 53 - Fax +33 (0)4 78 83 44 37 - e-mail : hydreka@hydreka.fr

A HALMA COMPANY